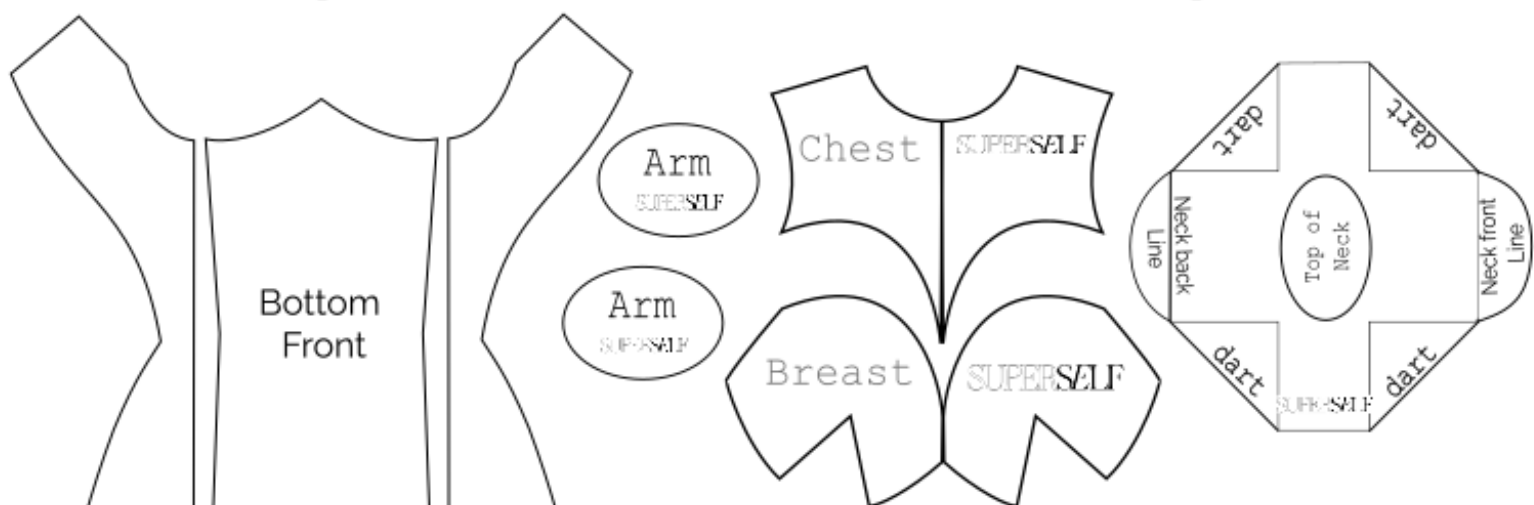


The Dressmaker

This dress maker has the measurements of a *Fashion Doll (1/6)*
Cut down the patterns and transfer them to the fabric provided



Cut the circle in the middle if you want to attach a stand from there. The circle can be made bigger or smaller depending of the stand you wish to use

INSTRUCTIONS

1. Cut the patterns
2. Transfer the patterns into the fabric. Add seam allowance of your preference, recommended 3/8 inch or 10 cm.
3. Start sewing all the darts.
4. Start sewing the Vertical Panels of the Bottom Front and the Top Back pieces.
5. Join at the center back the Bottom Back Left with Right piece.
6. Join the Bottom Back and Top Back pieces
7. Join the Chest with the Brest and then the Brest with the Bottom Front.
8. Join the Front and Back parts leaving the space at the neck and the arms to add the closing parts. Do not close the curves part at the neckline.
9. Attach the neck.
10. Attach the Closing Arm pieces.
11. Attach the Base leaving a gap to be able to fill it up with toy stuffing.
12. Add the toy stuffing.
13. Handstich close the gap.
14. In the center hole of the Base you can insert a Long Skeweer to create a stand of your choice.

Watch the tutorial video on Youtube
@SUPERSELF_Studio

